

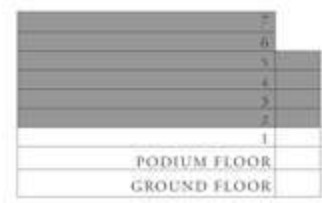
SERA 2

RASHID YACHTS & MARINA

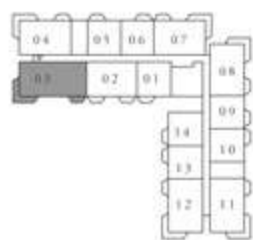
BUILDING B 3 BEDROOM TYPE A2

UNITS	203, 303, 403, 503, 603, 703	
SUITE AREA	131.14 SQ.M.	1411.58 SQ.FT.
BALCONY AREA	23.35 SQ.M.	251.34 SQ.FT.
TOTAL AREA	154.49 SQ.M.	1662.92 SQ.FT.

KEY SECTION

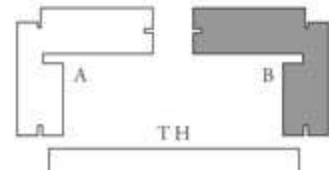


KEY PLAN



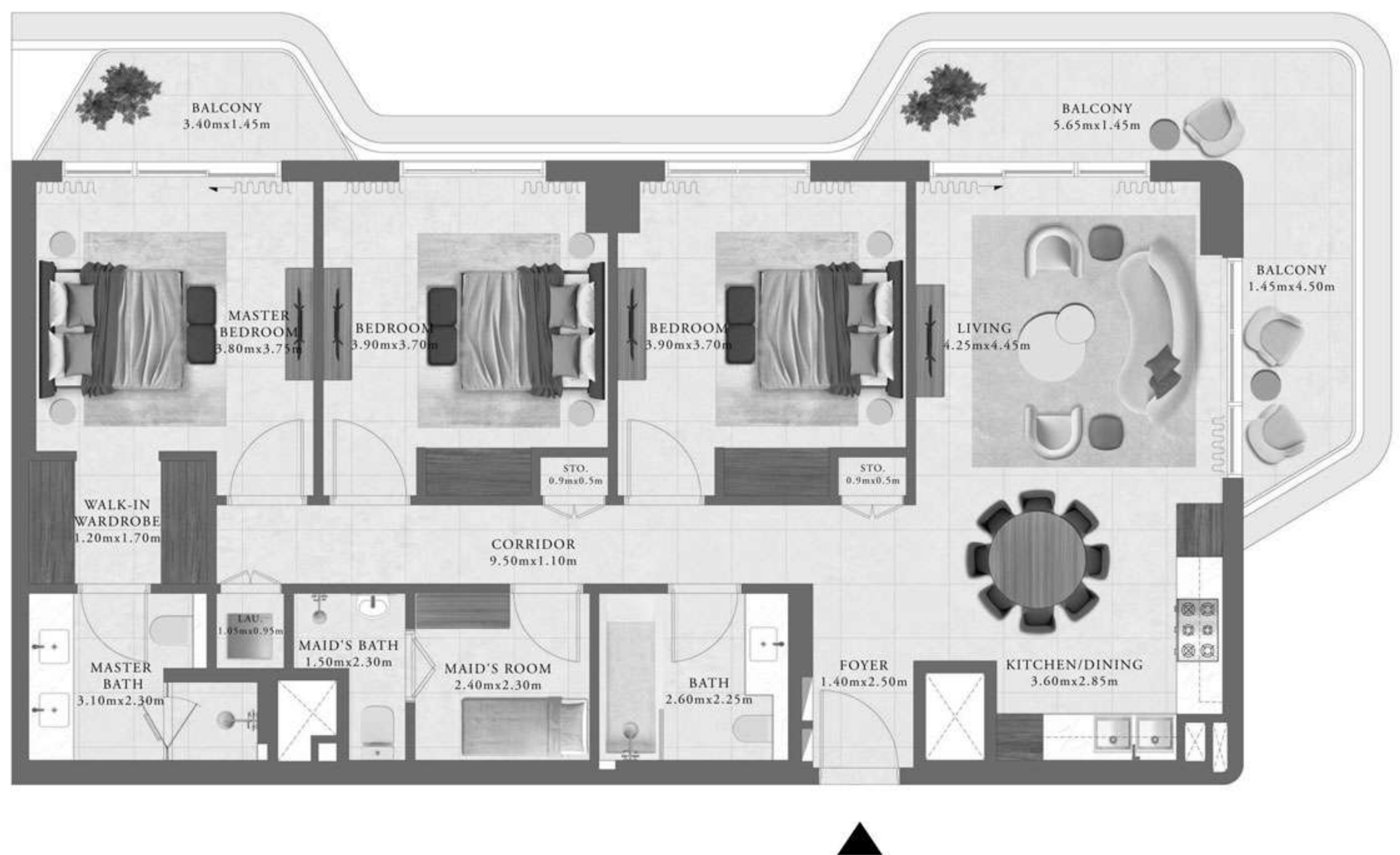
LEVEL 2ND TO 5TH

LAYOUT



SWIMMING POOL

LEVEL 6TH & 7TH



FLOOR PLAN 1. All dimensions are in imperial and metric, and measured from finish to finish excluding construction tolerances. 2. All materials, dimensions, and drawings are approximate only. 3. Information is subject to change without notice, at developer's absolute discretion. 4. Actual area may vary from the stated area. 5. Drawings not to scale. 6. All images used are for illustrative purposes only and do not represent the actual size, features, specifications, fittings, and furnishings. 7. The developer reserves the right to make revisions / alterations, at it's absolute discretion, without any liability whatsoever.

EMAAR

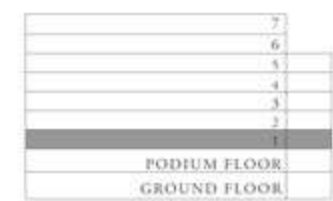
SERA 2

RASHID YACHTS & MARINA

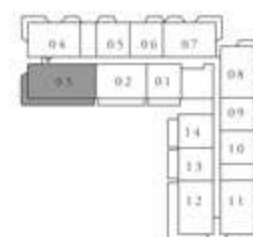
BUILDING B 3 BEDROOM TYPE A2.1

UNITS	103	
SUITE AREA	131.07 SQ.M.	1410.83 SQ.FT.
BALCONY AREA	42.18 SQ.M.	454.02 SQ.FT.
TOTAL AREA	173.25 SQ.M.	1864.85 SQ.FT.

KEY SECTION

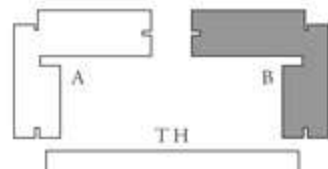


KEY PLAN

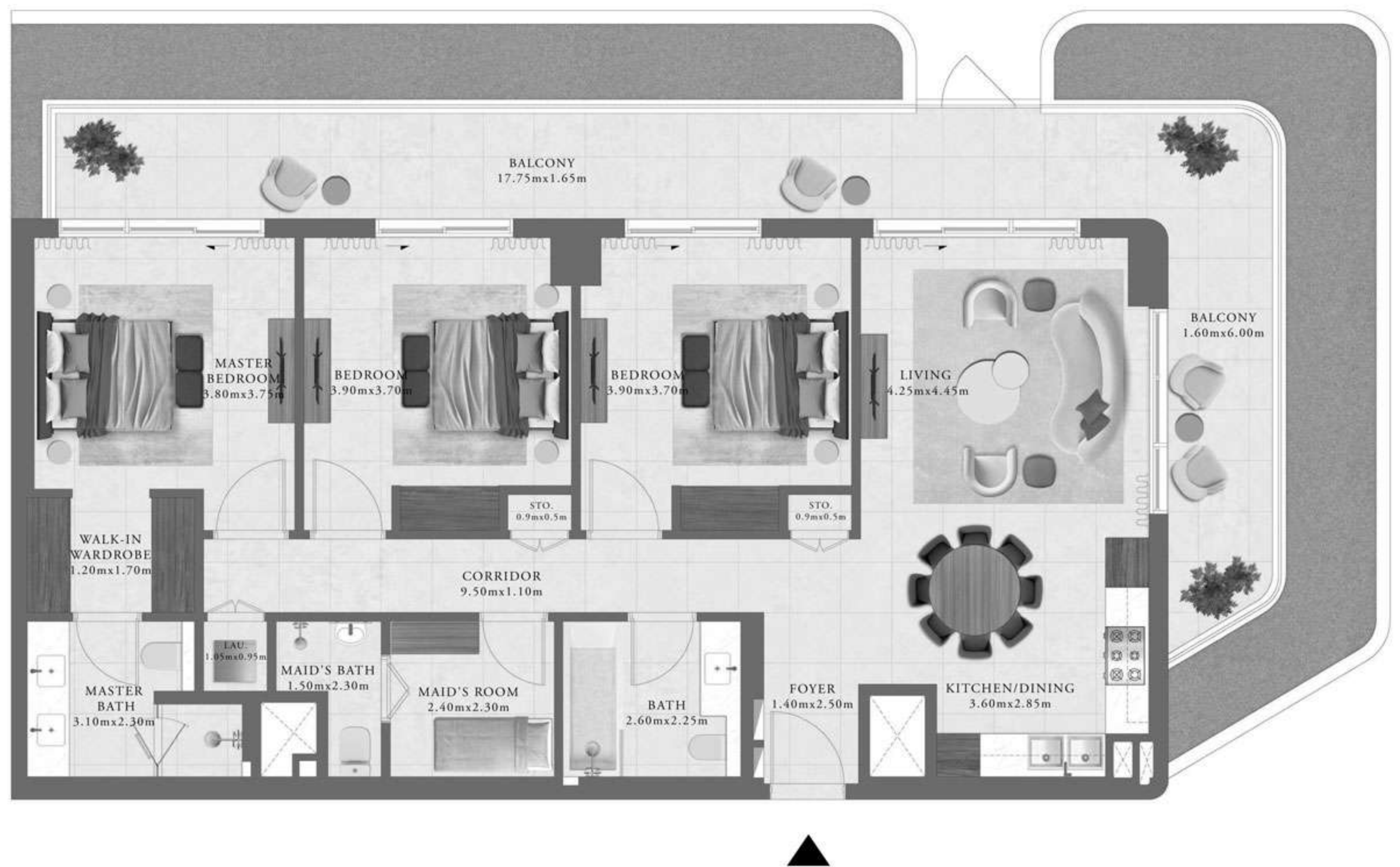


FIRST FLOOR LEVEL

LAYOUT



SWIMMING POOL



FLOOR PLAN 1. All dimensions are in imperial and metric, and measured from finish to finish excluding construction tolerances. 2. All materials, dimensions, and drawings are approximate only. 3. Information is subject to change without notice, at developer's absolute discretion. 4. Actual area may vary from the stated area. 5. Drawings not to scale. 6. All images used are for illustrative purposes only and do not represent the actual size, features, specifications, fittings, and furnishings. 7. The developer reserves the right to make revisions / alterations, at it's absolute discretion, without any liability whatsoever.

EMAAR